

# NOTICE TO MARINERS

West of Orkney Windfarm

Geotechnical Surveys

Rev 01 – Issued: 07/05/2025

This Notice to Mariners shall be updated as the survey progresses.

## Summary

- This survey shall take place from 12<sup>th</sup> of May 2025 to 3<sup>rd</sup> July 2025
- Contact details
  - Onshore FLO: phone: +44 (0)7926 41 88 20, email: [OWPLFisheries@xodusgroup.com](mailto:OWPLFisheries@xodusgroup.com);
  - Offshore FLO: phone +45 32 22 67 06
  - Further contact details Luis McArthur: phone: +44 (0)7771 86 28 68, email: [luis.mcarthur@westoforkney.com](mailto:luis.mcarthur@westoforkney.com)
- Name of vessel carrying out the work and towed equipment used: Connector
  - Geotechnical Survey Equipment
  - Ultra Short Baseline (USBL)
- Port of operation: Scrabster.

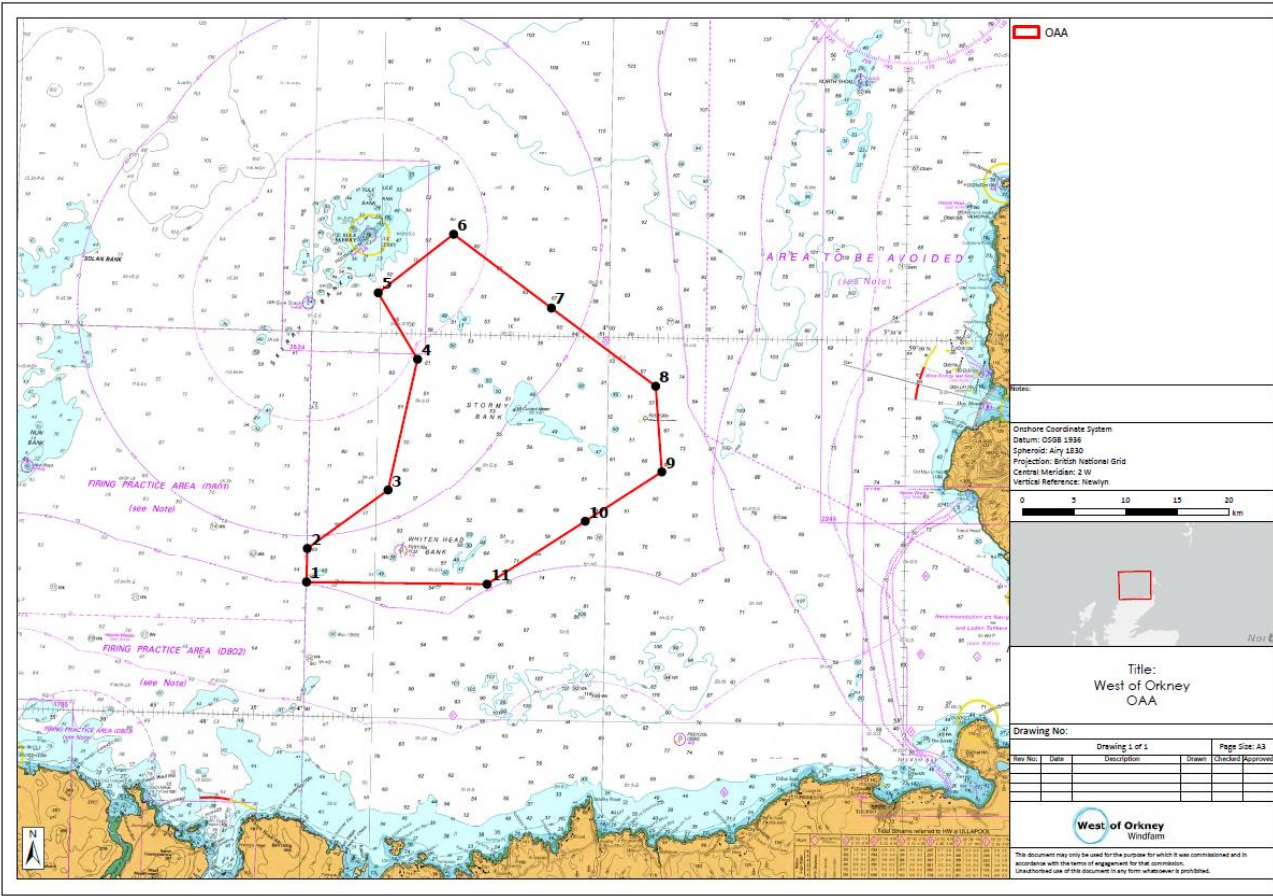


Figure 1. Area to be surveyed.

## Full information

Mariners are advised that a survey vessel and equipment will be used in the West of Orkney Windfarm OAA (Offshore Agreement Area).

The Geotechnical Survey will be carried out by Geo using survey vessel Connector (Call Sign: OYOJ2).

### Vessel information



---

Vessel	[Connector]
MMSI	[219166000]
Owner	[Geo]
Phone	[+44 (0)7771 86 28 68]
Email	[ <a href="mailto:luis.mcarthur@westoforkney.com">luis.mcarthur@westoforkney.com</a> ]

---

During surveying activities within the survey areas, the vessel will have restricted ability to manoeuvre and approaching vessels are requested to pass at a safe speed and distance. The proposed surveys are geotechnical surveys, which are essential to inform the development of the West of Orkney Windfarm.

### Project Description

The West of Orkney Windfarm survey will be conducted by Geo on behalf of Offshore Wind Power Limited (OWPL).

### Geotechnical Surveys Task

Geotechnical Surveys will be carried out at West of Orkney Windfarm OAA (see Figure 1) and coordinates are provided in Appendix A1.

The Geotechnical Surveys will include use of the following survey equipment at each of the surveyed areas:

- Geotechnical Survey Equipment
- Ultra Short Baseline (USBL)

Mariners are advised to keep a safety clearance of the vessel of no less than 500m.

### Port of Operation

Geo will mobilise / operate out of the port of Scrabster.

### Survey duration

The survey will commence on the 12<sup>th</sup> of May 2025 and run through to the 3<sup>rd</sup> July 2025. The total duration for survey activity is expected to take 44 days, additional days have been included in the duration to account for unforeseen operational and/or weather delays.

### Contact Details for Onshore Fisheries Liaison

Onshore Fisheries Liaison is being carried out by Xodus Group, for all fisheries enquires please contact Xodus Group Fisheries Liaison Officer (FLO).

---

Telephone number	+44 (0) 7926 41 88 20, +44 131 385 7374
Email	OWPLFisheries@xodusgroup.com

---

## A.1 Coordinates of the survey area

Point ID	WGS84	
	X_DDM	Y_DDM
1	004° 30.00' W	58° 46.97' N
2	004° 30.00' W	58° 48.72' N
3	004° 22.01' W	58° 51.85' N
4	004° 19.31' W	58° 58.69' N
5	004° 23.41' W	59° 02.10' N
6	004° 15.90' W	59° 05.22' N
7	004° 05.88' W	59° 01.47' N
8	003° 55.23' W	58° 57.49' N
9	003° 54.50' W	58° 53.04' N
10	004° 02.13' W	58° 50.41' N
11	004° 11.88' W	58° 47.05' N