

Notice to Mariners

Vessels & General Safety Advice

Scottish Hydro Electric Power Distribution (SHEPD)

Orkney Islands Subsea Inspections – 2023

Date of Issue: 3rd July 2023

PROJECT OVERVIEW

Please be advised that Aspect Land & Hydrographic Surveys Ltd (on behalf of SHEPD) will be undertaking subsea inspections of several cables across the Orkney Islands. Please refer to Figure 1 - Figure 10 that highlights each cable location.

Given the different conditions and water depths anticipated at each site, a range of vessels will be utilised across the project, detailed overleaf.

The inspection works will be centred on a 50m cable corridor, defined by the start and end coordinates listed in Table 1.

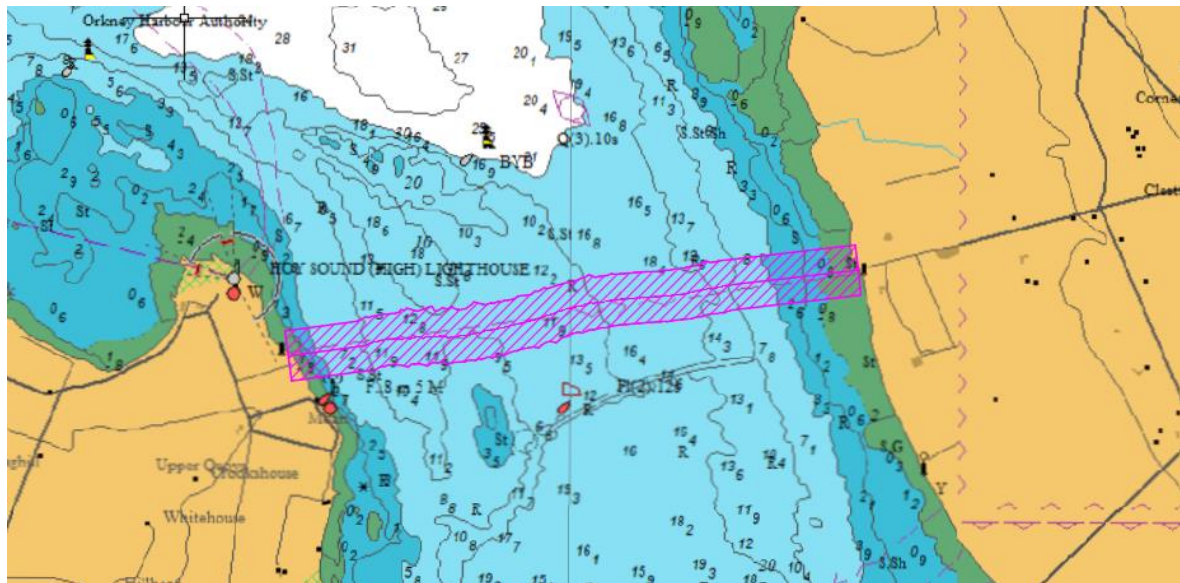
| Circuit ID | Cable Name | Start Point | | End Point | |
|------------|------------------------------|----------------------|-----------------------|----------------------|-----------------------|
| | | Latitude [WGS 84] | Longitude [WGS 84] | Latitude [WGS 84] | Longitude [WGS 84] |
| SHEPD_107 | Mainland Orkney to Graemsay | 58°56'10"N | 003°13'48"W | 58°55'58"N | 003°16'10"W |
| SHEPD_96 | Mainland Orkney to Hoy South | 58°54'09"N | 003°17'04"W | 58°55'38"N | 003°12'45"W |
| SHEPD_22 | Hoy - Flotta | 58°49'29"N | 003°10'30"W | 58°49'48"N | 003°08'39"W |
| SHEPD_125 | Mainland Orkney to Rousay | 59°06'39"N | 003°03'14"W | 59°07'37"N | 003°02'13"W |
| SHEPD_149 | Rousay - Westray | 59°10'29"N | 002°57'22"W | 59°14'18"N | 002°52'29"W |
| SHEPD_167 | Eday - Westray | 59°10'58"N | 002°47'56"W | 59°14'19"N | 002°52'29"W |
| SHEPD_159 | Sanday - Eday | 59°12'19"N | 002°41'37"W | 59°11'26"N | 002°45'54"W |
| SHEPD_153 | Shapinsay - Stronsay | 59°02'47"N | 002°49'54"W | 59°05'14"N | 002°39'10"W |
| SHEPD_108 | Stronsay - Sanday | 59°08'53"N | 002°39'00"W | 59°12'25"N | 002°40'52"W |
| SHEPD_123 | Westray - Papa Westray | 59°17'52"N | 002°54'56"W | 59°19'53"N | 002°53'45"W |

TABLE 1 - CABLE LOCATIONS & COORDINATES

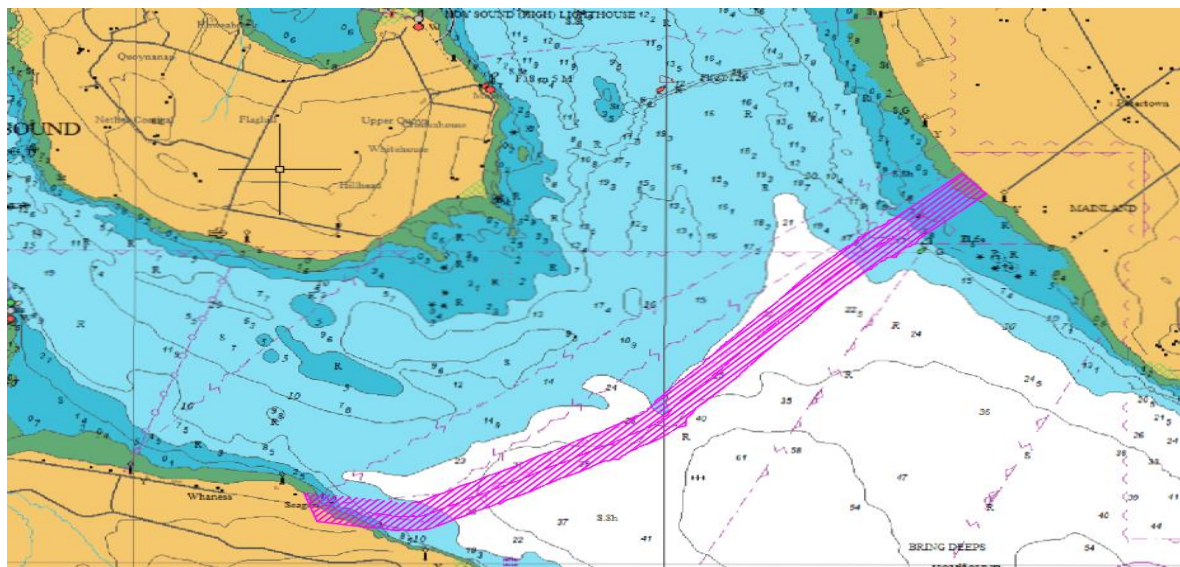
Survey operations at these locations are expected to commence in July 2023, with start dates and anticipated durations listed against each individual location overleaf.

LOCATION DETAILS

Cable location and indicative survey corridors are noted below for information. Equipment calibration operations may take place out with the defined corridor and these areas will be chosen so as not to interfere with fishing / marine traffic activity.

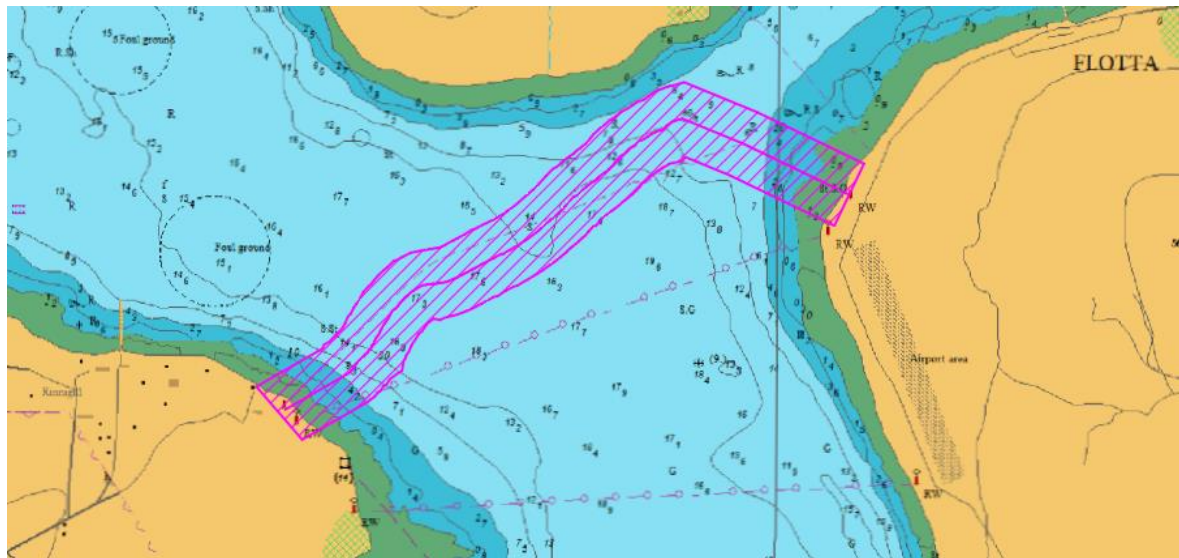
Circuit ID & Location: SHEPD_107 – Mainland Orkney to Graemsay


| Proposed Dates | Vessel Scope | Vessel(s) |
|---------------------|-----------------------------|---|
| 19/07/23 – 10/08/23 | Underwater Cable Inspection | Offshore Sensor Marine Sensor Coastal Sensor Coastal Sensor (II) |

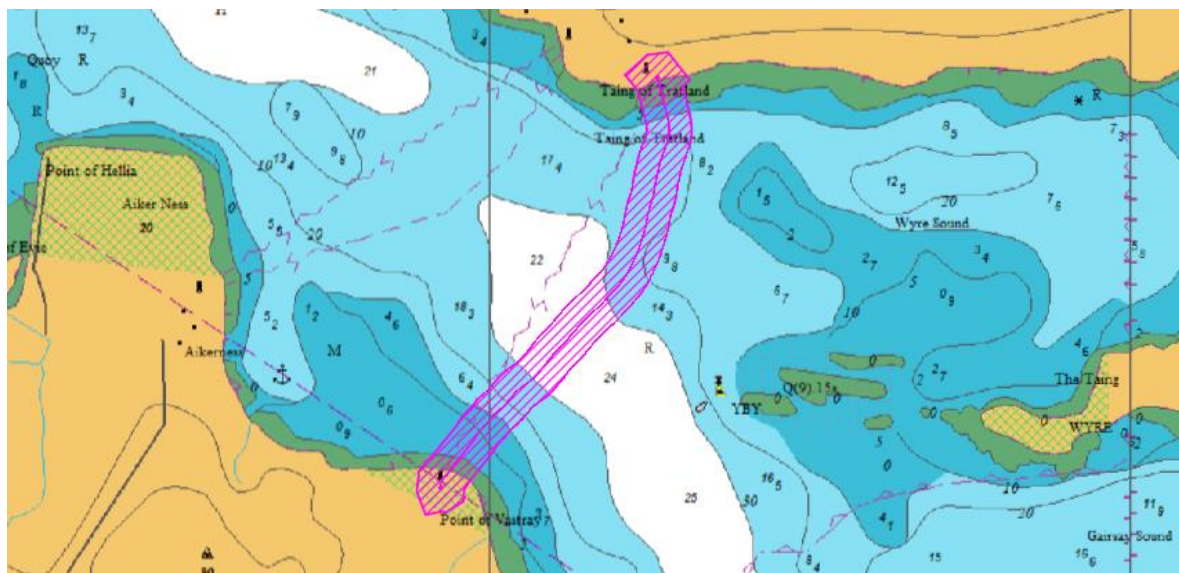
FIGURE 1 – SHEPD_107 – MAINLAND ORKNEY TO GRAEMSAY
Circuit ID & Location: SHEPD_96 - Mainland Orkney to Hoy South


| Proposed Dates | Vessel Scope | Vessel(s) |
|---------------------|-----------------------------|---|
| 21/07/23 – 13/08/23 | Underwater Cable Inspection | Offshore Sensor Marine Sensor Coastal Sensor Coastal Sensor (II) |

FIGURE 2 – SHEPD_96 – MAINLAND ORKNEY TO HOY SOUTH

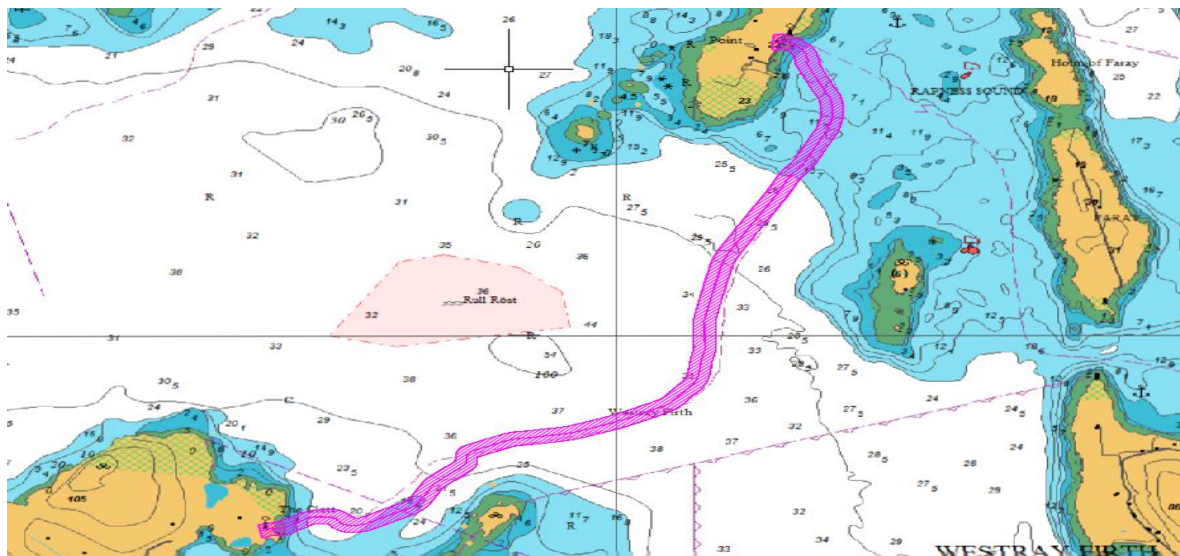
Circuit ID & Location: SHEPD_22 - Hoy to Flotta


| Proposed Dates | Vessel Scope | Vessel(s) |
|---------------------|-----------------------------|---|
| 01/08/23 – 23/08/23 | Underwater Cable Inspection | Offshore Sensor Marine Sensor Coastal Sensor Coastal Sensor (II) |

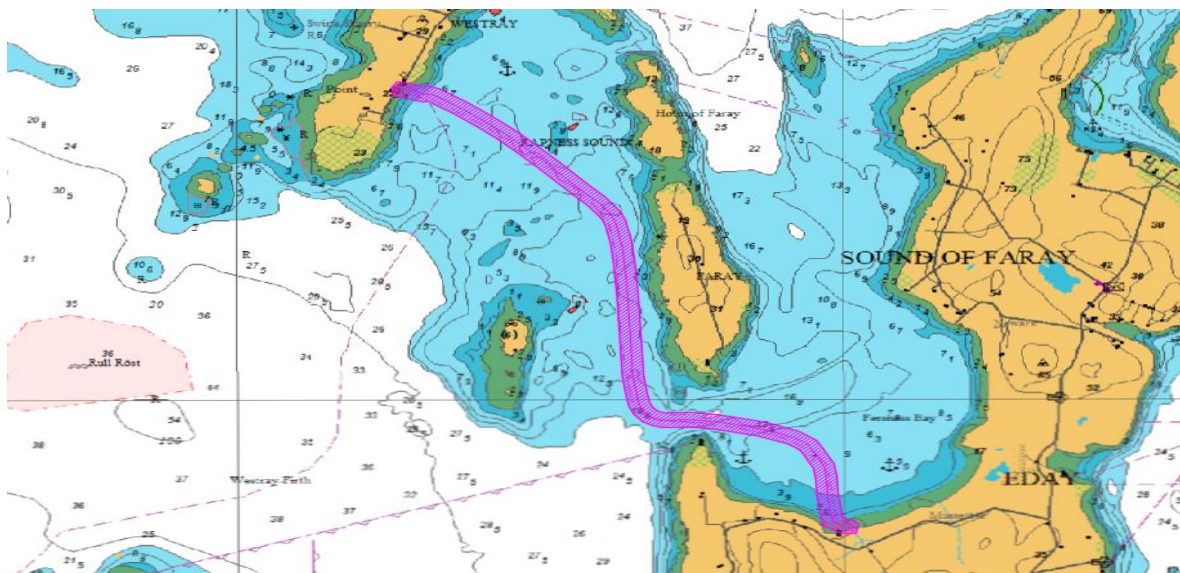
FIGURE 3 – SHEPD_22 – HOY TO FLOTTA
Circuit ID & Location: SHEPD_125 – Mainland Orkney to Rousay


| Proposed Dates | Vessel Scope | Vessel(s) |
|---------------------|-----------------------------|---|
| 04/08/23 – 26/08/23 | Underwater Cable Inspection | Offshore Sensor Marine Sensor Coastal Sensor Coastal Sensor (II) |

FIGURE 4 – SHEPD_125 – MAINLAND ORKNEY TO ROUSAY

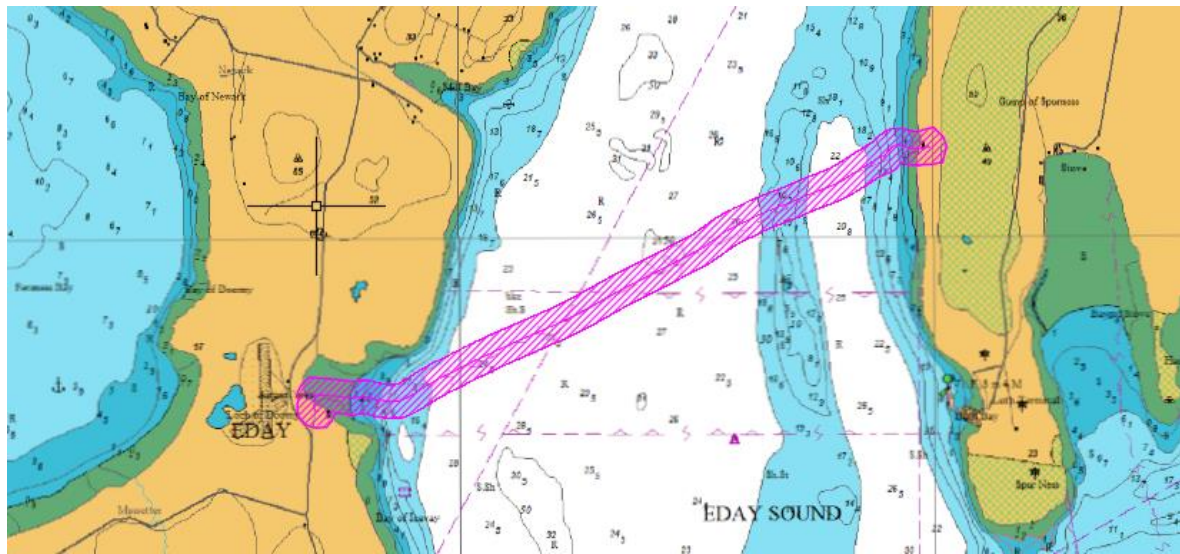
Circuit ID & Location: SHEPD_149 – Rousay to Westray


| Proposed Dates | Vessel Scope | Vessel(s) |
|---------------------|-----------------------------|---|
| 05/08/23 – 10/09/23 | Underwater Cable Inspection | Offshore Sensor Marine Sensor Coastal Sensor Coastal Sensor (II) |

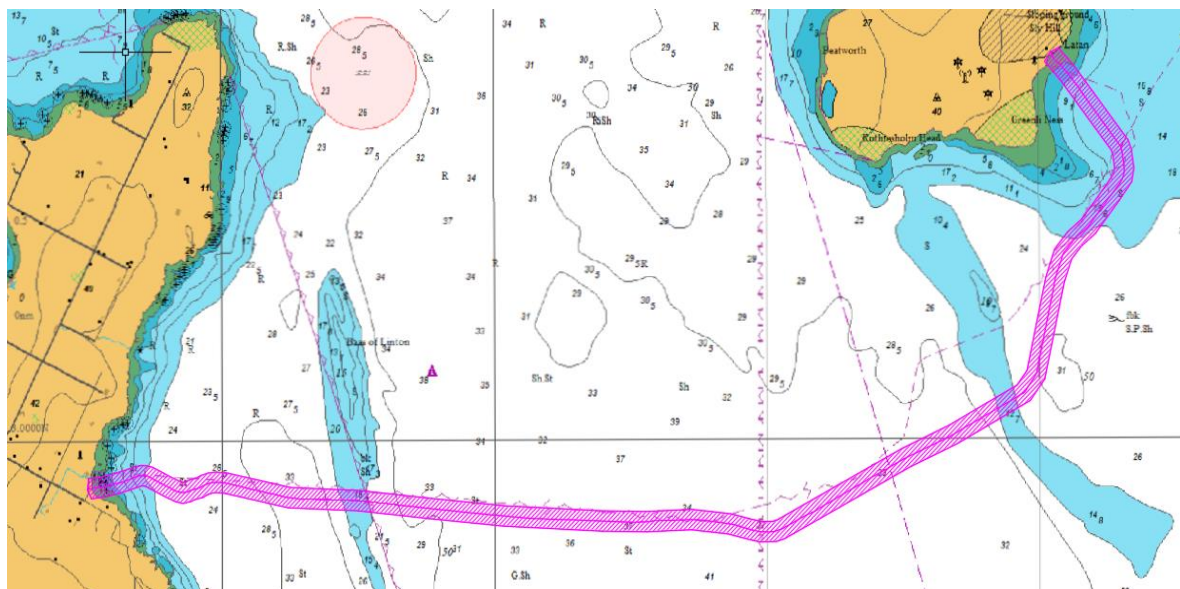
FIGURE 5 – SHEPD_149 – ROUSAY TO WESTRAY
Circuit ID & Location: SHEPD_167 – Eday to Westray


| Proposed Dates | Vessel Scope | Vessel(s) |
|-----------------------|-----------------------------|---|
| 15/08/23 – 24/09/2023 | Underwater Cable Inspection | Offshore Sensor Marine Sensor Coastal Sensor Coastal Sensor (II) |

FIGURE 6 – SHEPD_167 – EDAY TO WESTRAY

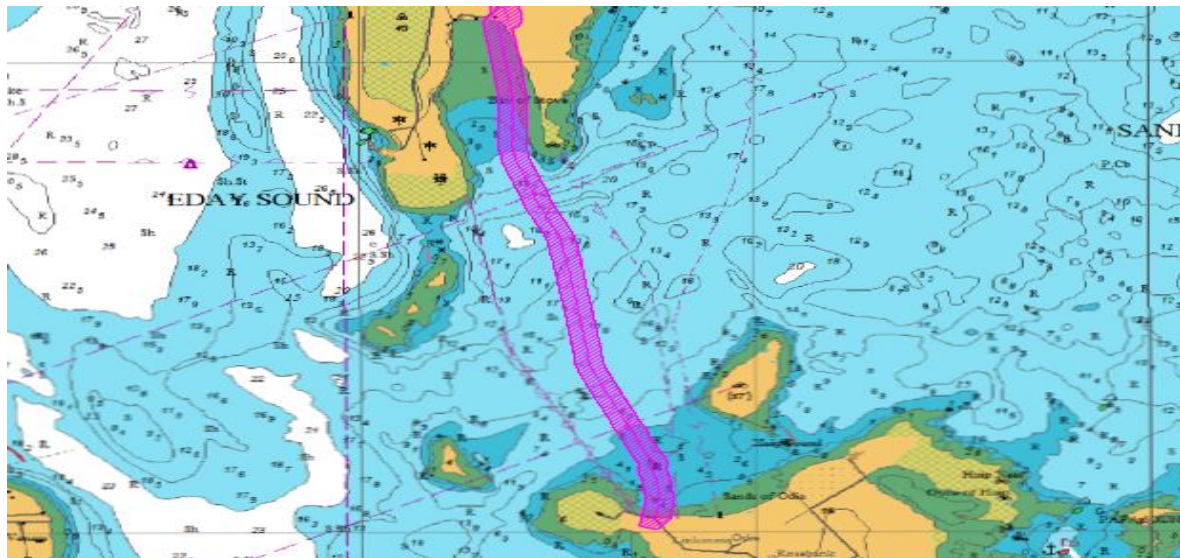
Circuit ID & Location: SHEPD_159 – Sanday to Eday


| Proposed Dates | Vessel Scope | Vessel(s) |
|---------------------|-----------------------------|---|
| 17/08/23 – 05/10/23 | Underwater Cable Inspection | Offshore Sensor Marine Sensor Coastal Sensor Coastal Sensor (II) |

FIGURE 7 – SHEPD_159 – SANDAY TO EDAY
Circuit ID & Location: SHEPD_153 – Shapinsay to Stronsay


| Proposed Dates | Vessel Scope | Vessel(s) |
|---------------------|-----------------------------|---|
| 19/08/23 – 22/10/23 | Underwater Cable Inspection | Offshore Sensor Marine Sensor Coastal Sensor Coastal Sensor (II) |

FIGURE 8 – SHEPD_153 – SHAPINSAY TO STRONSAY

Circuit ID & Location: SHEPD_108 – Stronsay to Sanday


| Proposed Dates | Vessel Scope | Vessel(s) |
|---------------------|-----------------------------|---|
| 21/08/23 – 03/11/23 | Underwater Cable Inspection | Offshore Sensor Marine Sensor Coastal Sensor Coastal Sensor (II) |

FIGURE 9 – SHEPD_108 – STRONSAY TO SANDAY
Circuit ID & Location: SHEPD_123 – Westray to Papa Westray



| Proposed Dates | Vessel Scope | Vessel(s) |
|---------------------|-----------------------------|---|
| 29/08/23 – 07/11/23 | Underwater Cable Inspection | Offshore Sensor Marine Sensor Coastal Sensor Coastal Sensor (II) |

FIGURE 10 – SHEPD_123 – WESTRAY TO PAPA WESTRAY
VESSEL DETAILS

All vessels to be used during the survey and inspection campaign are owned and operated by Aspect Land & Hydrographic Surveys Ltd. Operations will be limited to daylight hours only.

The vessels conducting these inspections will be restricted in their ability to manoeuvre and will display the appropriate lights and shapes. Other vessels are requested to pass at a safe speed and provide a minimum clearance of 500m (COLREGs Rule 16 & 18) during marine operations.

All vessels will monitor VHF Channel 16 throughout survey operations. Mobile contacts for the vessels are listed at the end of this NtM.

| Vessel Photo | Vessel Description |
|--|---|
|  | Offshore Sensor LOA: 22m Beam: 8m Draft: 1.85m Call Sign: MEGQ8 MMSI No: 232019172 VHF: 16 |

| Vessel Photo | Vessel Description |
|---|---|
|  | Marine Sensor LOA: 6.9m Beam: 2.5m Draft: 0.3m Call Sign: MLLR2 MMSI No: 235033255 VHF: 16 |

| Vessel Photo | Vessel Description |
|---|---|
|  | <p>Coastal Sensor</p> <p>LOA: 6.1m</p> <p>Beam: 2m</p> <p>Draft: 0.3m</p> <p>Call Sign: 2BRB2</p> <p>MMSI No: 235068593</p> <p>VHF: 16</p> |

| Vessel Photo | Vessel Description |
|--|--|
|  | <p>Coastal Sensor II</p> <p>LOA: 6.5m</p> <p>Beam: 2m</p> <p>Draft: 0.3m</p> <p>Call Sign: MAMM2</p> <p>MMSI No: 232005897</p> <p>VHF: 16</p> |

CONTACT DETAILS

Vessel management contact details are given in the table below.

| Name & Designation | Organisation | Contact Number | Email |
|---------------------------------------|--|--------------------------------|--|
| Stephen Scott Project Manager | Aspect Land & Hydrographic Surveys | 01294 313 399 07809 440 581 | sscott@aspectsurveys.com |
| Andrew McCormick Fleet Manager | Aspect Land & Hydrographic Surveys | 01294 313 399 07796 171 320 | amccormick@aspectsurveys.com |
| Scott Norman HSEQ Manager | Aspect Land & Hydrographic Surveys | 01294 313 399 07516 801 268 | snorman@aspectsurveys.com |
| Craig Stephenson Technical Manager | Aspect Land & Hydrographic Surveys | 01294 313 399 07780 977 568 | cstephenson@aspectsurveys.com |
| General Office | Aspect Land & Hydrographic Surveys | 01294 313 399 | mail@aspectsurveys.com |

FISHING LIAISON OFFICERS (FLOs)

Fishing liaison for the work is being coordinated by Brown and May Marine (BMM). For any commercial fishery queries please contact the Company Fishing Liaison Officer (CFLO) Alex Winrow-Giffin on 07760 160039 / 01379 872144, alex@brownmay.com. The local Fishing Industries Representative (FIR) Chris Davidson (07810 305100; cad17@hotmail.co.uk) will also be in place to liaise with vessels and fishing operations.

LEGAL NOTICE

Please be advised that this Notice to Mariners should be treated as official notice of the nature, duration and location of the works which are scheduled to take place. During the period of this notice, we request that you plan your activities around our short-term, temporary activities.

Any failure to remove equipment or entry into the identified location in a manner that would constitute a hazard may be a breach of your duties of safe seamanship as described in the Convention on International Regulations for Preventing Collisions at Sea 1972 and/or the Merchant Shipping Act 1995, and may result in removal of the relevant equipment. Failure to remove equipment or entry into the identified location in a manner that would constitute a hazard may constitute a breach of duty of care at common law, and a failure to protect submarine cables for successful seabed user co-existence under Scotland's National Marine Plan.

SSEN shall found on this notice in the event of any damage, loss or disruption arising from failure to heed the information herein.

DISTRIBUTION LIST

The Distribution List of the Notice to Mariners is as per the stakeholder list in the SHEPD Fisheries Liaison and Management Action Plan (FLMAP).