

# NOTICE TO MARINERS

Offshore Wind Power Limited  
West of Orkney Windfarm  
Offshore Geotechnical Survey 2023  
Rev 02 – Issued: 28<sup>th</sup> June 2023

Mariners are advised that a Geotechnical survey will be undertaken within the Option Agreement Area (OAA). A survey vessel and equipment will be operating within the OAA during the survey period.

This notice will be updated as the survey progresses.

# 1 SUMMARY

This survey shall take place from 1<sup>st</sup> June 2023 last for 45 days (subject to weather) and will incorporate a bore hole survey comprising of up to 18 locations (subject to weather).

## 1.1 Contact details:

- Onshore: phone: +44 (0) 7926 418 820, email: [OWPLFisheries@xodusgroup.com](mailto:OWPLFisheries@xodusgroup.com);
- Offshore Fisheries Liaison Officer (FLO) (bridge number): +47 512 290 10.

### 1.1.1 Vessel and Equipment

Name of vessel carrying out the work: Dina Polaris

**Survey Equipment:** a downhole sampler, wireline core barrel, CPTU, and Ultra-Short Baseline (USBL) positioning system.

Port of Operation: Scrabster

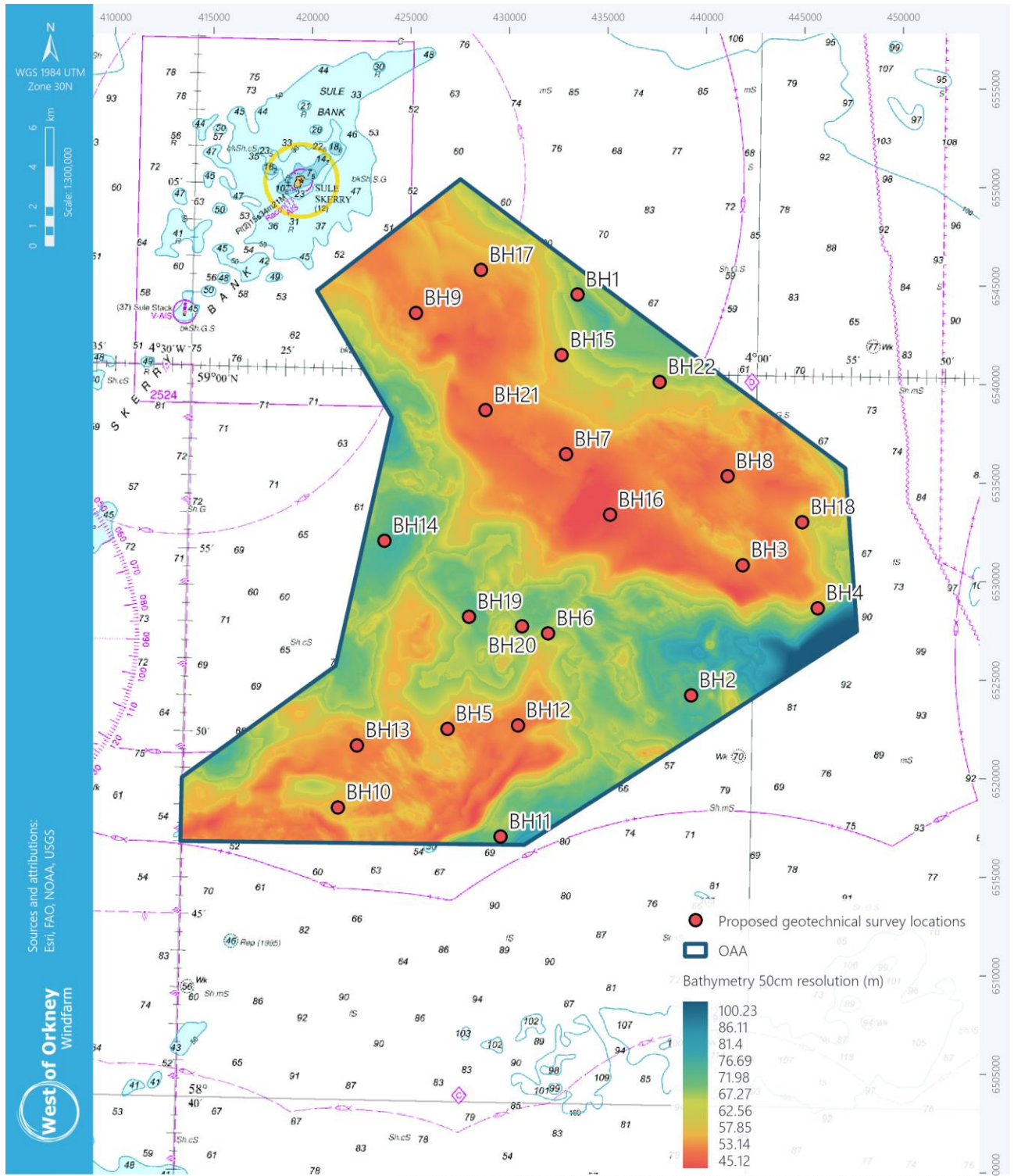


Figure 1: Indicative sample locations (subject to weather)

## 2 FULL INFORMATION

Mariners are advised that a bore hole drilling campaign will be commenced on the 1<sup>st</sup> June 2023 and is anticipated to take a maximum of 45 operational days, weather permitting.

During surveying activities within the OAA, the vessel will have restricted ability to manoeuvre and approaching vessels are requested to pass at a safe speed and distance. The proposed survey is a borehole drilling survey to identify seabed condition subsurface, which is essential to inform the project design specifications.

### 2.1 Vessel information



---

Vessel: Dina Polaris

IMO: 9765031

Vessel Contractor: Geoquip Marine

VSat: Bridge Tel +47 512 290 10

Email: [bridge@dinapolaris.mmred.no](mailto:bridge@dinapolaris.mmred.no)

---

The vessel will mobilise and operate out of Scrabster Harbour in Caithness. The vessel will drill up to 22 boreholes up to a depth of 60 m depending on weather and location conditions/constraints.

## 2.2 Survey Duration

The survey will commence on the 1<sup>st</sup> June 2023 and survey activity would run for 45 operational days, depending on weather. The survey vessel will be present in the region for a longer overall period allowing for time to travel between the survey sites and downtime for weather and technical constraints.

## 2.3 Contact details

Fisheries Liaison is being carried out by Xodus Group, for all fisheries enquires please contact Xodus Group Fisheries Liaison Officer (FLO).

- Onshore: phone: +44 (0) 7926 418 820, email: [OWPLFisheries@xodusgroup.com](mailto:OWPLFisheries@xodusgroup.com);
- Offshore Fisheries Liaison Officer (FLO) (bridge number): +47 512 290 10.

## 2.4 Coordinates of indicative sample locations

LOCATION	LATITUDE	LONGITUDE
1	59° 02' 07" N	004° 09' 34" W
2	58° 51' 12" N	004° 03' 13" W
3	58° 54' 48" N	004° 00' 35" W
4	58° 53' 39" N	003° 56' 35" W
5	58° 50' 11" N	004° 16' 02" W
6	58° 52' 50" N	004° 10' 48" W
7	58° 57' 45" N	004° 10' 01" W
8	58° 57' 13" N	004° 01' 27" W
9	59° 01' 32" N	004° 18' 07" W
10	58° 47' 58" N	004° 21' 44" W
11	58° 47' 15" N	004° 13' 07" W
12	58° 50' 18" N	004° 12' 19" W
13	58° 49' 41" N	004° 20' 47" W
14	58° 55' 17" N	004° 19' 33" W
15	59° 00' 27" N	004° 10' 21" W
16	58° 56' 07" N	004° 07' 39" W
17	59° 02' 45" N	004° 14' 43" W
18	58° 55' 59" N	003° 57' 28" W
19	58° 53' 16" N	004° 15' 00" W
20	58° 53' 01" N	004° 12' 11" W
21	58° 58' 55" N	004° 14' 19" W
22	58° 59' 46" N	004° 05' 08" W

Table 1: Indicative Borehole locations (subject to weather)