

Shetland HVDC Link

Shetland to Caithness

Notice to Mariners

NtM Number	Shetland HVDC Link/028
Date of Issue	21.10.2022

1 Planned Activity

NKT, on behalf of Scottish Hydro Electric Transmission Plc, are installing the Shetland HVDC Link cable for Campaign 1. Campaign 1 begins at Noss Head, North of Wick until approximately KP155, please see chart and coordinates provided below.

The Shetland HVDC link is a critical electricity transmission link and will form part of the electrical transmission grid that is essential to the transport of renewable energy between the locations where it is generated and areas of demand, and the delivery of both Scotland's and the United Kingdom's 2030 climate change targets.

The cable has successfully been laid on the seabed floor by the vessel **NKT Victoria**. Trenching of the cable to the required burial depth in the seabed has been completed by the **Grand Canyon III**. For the sections remaining along the cable route that have not been trenched, rock placement will be undertaken to achieve the required protection. The rock placement works will be completed in two campaigns by vessels **Heimdal R** and **Rockpiper**. All works will be continuous, 24 hours a day. Within the Noss Head Marine Protected Area the cable has been surface laid and protected by a cable protection system.

In the period between cable lay and cable burial, or protection by rock placement, the cable will be exposed on the seafloor. During this time the cable is sensitive to any external impact and constitutes a snagging risk for anchoring, fishing gear or other equipment with seabed intervention. For this reason, the cable corridor will remain closed for any fishing that interacts with the seabed, anchoring or use of other equipment with seabed intervention.

To protect the cable in the cable corridor, **Guard Vessels** will be deployed along the route.

It is requested that all vessels maintain a minimum of 500m safe distance from the installation vessels and pass at reduced speed. Fishing gear or other equipment with seabed intervention should not be deployed when approaching the cable corridor.

Co-ordinates of the cable route and charts of the working area are provided below.

Please be aware that vessels **Heimdal R** and **Rockpiper** will be restricted in their ability to manoeuvre as defined under COLREGs (International Regulations for Preventing Collisions at Sea 1972). Masters of vessels are therefore requested to maintain their vessels at a minimum safe passing distance of 500 metres.

Heimdal R and **Rockpiper** will display the appropriate shapes and lights in accordance with COLREGs Rules 16 and 18.

Guard Vessels

To protect the cable during installation activities Guard Vessels will be placed at approximately 15km intervals along the cable route. To provide the required coverage, approximately 7 guard vessels are expected to be utilised. The primary purpose of the Guard Vessels is to guard any unprotected cable along the cable route.

The Guard Vessels will operate on a 24hr / 7 day per week basis. Any exchange of vessels shall be on site and coordinated so the unprotected cable is never unguarded.

The Guard Vessels have three guidance zones, these are described below. It should be noted that these are guidance zones and have the potential to vary depending on vessel zone and sea conditions:

OBSERVATION ZONE – referenced as 15km but extends as far as visible.

EARLY WARNING ZONE – extends out 7.5km either side of the cable route. Entry into this zone is monitored by the Guard Vessels. Any vessel moving into the Early Warning Zone will be contacted and made aware of the project's restricted areas.

SAFETY ZONE – represents an area of water 500m around the cable route. It extends out for 500m in all directions of the cable. For any vessel that poses a risk to the unprotected cable, reasonable efforts to prevent entry into the SAFETY ZONE will be undertaken.



Illustration reproduced with permission from SOLACE Global

2 Outline Programme of Works (approximate)

Cable Lay (<i>NKT Victoria</i>)	Completed	
Trenching (<i>Grand Canyon III</i>)	Completed	
Rock Placement Campaign 1a (<i>Heimdal R</i>)	Earliest Start Date: Onsite	Estimated Completion Date: 30/11/2022
Rock Placement Campaign 1b (<i>Rockpiper</i>)	Earliest Start Date: 31/10/2022	Estimated Completion Date: 01/01/2023
Guard Vessels	Start Date: Onsite	Estimated Completion Date: 01/01/2023

These dates are subject to weather and operational uncertainties that could extend the overall duration to 15/01/2023, with the potential for further extension to the work duration.

3 Chart of Activity Area

Please find chart on the last page of the document.

4 Safe Clearances, Navigation Safety Features and Safety Notes for Mariners

Vessels are requested to maintain a safe distance (500m) from **Heimdal R**, **Rockpiper** and the **Guard Vessels**.

All vessels are required to comply with the COLREGS, especially rules 16 and 18 as **Heimdal R** and **Rockpiper** will be restricted in their ability to manoeuvre.

5 Vessel Details

Rock Placement Vessel Campaign 1a

Vessel Name:	<i>Heimdal R</i>
Vessel Type / LOA(m):	Dredger/MPV / 84 m
IMO Number:	9127320
VHF Call Sign:	PCUO
MMSI:	244060659
Vessel Bridge Mobile:	+45 89874333
Vessel Sat Phone:	+88 1641452756
Onshore Contact:	Henrik Frederiksen hfr@rohde-nielsen.dk +45 4272 0860



Rock Placement Vessel Campaign 1b

Vessel Name:	<i>Rockpiper</i>
Vessel Type / LOA(m):	Fallpipe vessel / 158.6
IMO Number:	9583861
VHF Call Sign:	5BML3
MMSI:	209449000
Vessel Bridge Mobile:	Bridge phone: +31 78 808 0273 GSM: +47 95 09 309 7
Vessel Sat Phone:	INMARSAT: +870 773 941 740
Onshore Contact:	S. Lundshof (Fleet Manager) T +31 78 69 68 546 M +31 61 24 54 02 C. Klamer (Operations Manager) T +31 78 69 69 523 M +31 65 18 69 325

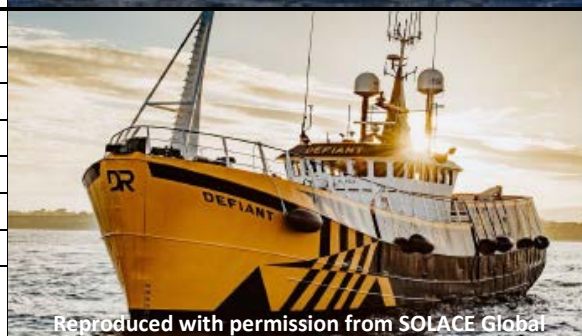


Guard Vessels

Vessel Name:	<i>Adorne</i>
Vessel Type / LOA(m):	Fishing Vessel / 24.94 m
IMO Number:	8604838
VHF Call Sign:	MFQ18
MMSI:	232023203
Vessel Bridge Mobile:	N/A
Vessel Sat Phone:	0044 1723 430 719
Onshore Contact:	operations@solaceglobal.com



Vessel Name:	<i>Fulmar</i>
Vessel Type / LOA(m):	Fishing Vessel / 25.9 m
IMO Number:	8410110
VHF Call Sign:	GOZJ
MMSI:	234999055
Vessel Bridge Mobile:	N/A
Vessel Sat Phone:	0044 1346 417 829
Onshore Contact:	operations@solaceglobal.com
Vessel Name:	<i>Defiant</i>
Vessel Type / LOA(m):	Guard Vessel / 28 m
IMO Number:	8810152
VHF Call Sign:	MLAS6
MMSI:	233651000
Vessel Bridge Mobile:	N/A
Vessel Sat Phone:	0044 12 6145 5459
Onshore Contact:	operations@solaceglobal.com
Vessel Name:	<i>Reaper</i>
Vessel Type / LOA(m):	Fishing Vessel / 18.25 m
IMO Number:	8957209
VHF Call Sign:	MFIX5
MMSI:	232022358
Vessel Bridge Mobile:	N/A
Vessel Sat Phone:	0044 1947 878 332
Onshore Contact:	operations@solaceglobal.com
Vessel Name:	<i>ReulNa Mara</i>
Vessel Type / LOA(m):	Fishing Vessel / 24.8 m
IMO Number:	8782719
VHF Call Sign:	GGKA
MMSI:	234671000
Vessel Bridge Mobile:	N/A
Vessel Sat Phone:	0044 1997487416
Onshore Contact:	operations@solaceglobal.com
Vessel Name:	<i>Replenish</i>
Vessel Type / LOA(m):	Fishing Vessel / 24.45 m
IMO Number:	8119182
VHF Call Sign:	MASY7
MMSI:	235005180
Vessel Bridge Mobile:	N/A
Vessel Sat Phone:	0044 1346 490 795
Onshore Contact:	operations@solaceglobal.com
Vessel Name:	<i>Solstice</i>
Vessel Type / LOA(m):	Guard Vessel / 20.75m
IMO Number:	8953033




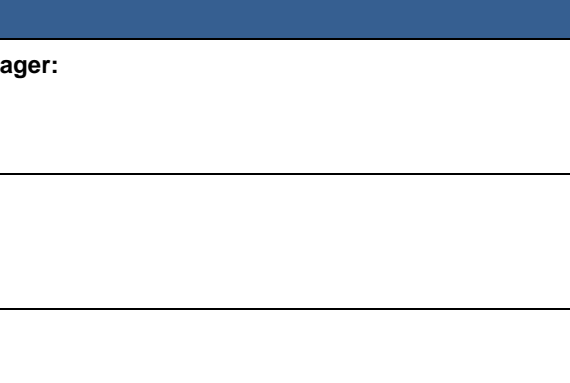
VHF Call Sign:	MPFN7	
MMSI:	233486000	
Vessel Bridge Mobile:	N/A	
Vessel Sat Phone:	0044 1346 511 446	
Onshore Contact:	operations@solaceglobal.com	

Reproduced with permission from SOLACE Global

Guard Vessels - Relief Vessels

Vessel Name:	<i>Bountiful</i>	
Vessel Type / LOA(m):	Workboat / 20m	
IMO Number:	8699871	
VHF Call Sign:	MJLF4	
MMSI:	232004846	
Vessel Bridge Mobile:	01779 400 153	
Vessel Sat Phone:	N/A	
Onshore Contact:	operations@solaceglobal.com	

Reproduced with permission from SOLACE Global

Vessel Name:	<i>Resolution</i>	
Vessel Type / LOA(m):	Guard Vessel / 18 m	
IMO Number:	8214334	
VHF Call Sign:	MBCZ5	
MMSI:	235002260	
Vessel Bridge Mobile:	N/A	
Vessel Sat Phone:	0044 19 4766 0301	
Onshore Contact:	operations@solaceglobal.com	

Reproduced with permission from SOLACE Global

6 Project Contact Details

Scottish Hydro Electric Transmission Subsea Cable Installation Manager:

Name: Lorraine Wallington
Email: Lorraine.wallington@sse.com
Telephone: +44 7443 173906

Scottish Hydro Electric Transmission Lead Project Manager:

Name: Chris Finnigan
Email: chris.finnigan@sse.com
Telephone: +44 7385 385654

Fisheries Liaison Officer (FLO):

Name: John Watt
Email: john.watt@brownmay.com
Telephone: +44 7590 880746

7 Geographic co-ordinates of activity area

All positions quoted in WGS84 UTM Zone 30N and in degrees and decimal minutes

Please note: The coordinates presented below represent a simplified centreline, the works will be completed +/-100m either side of this centreline. As illustrated in the chart

Area	WGS84 UTM Zone 30N		Degrees Decimal Minutes			
	Easting	Northing	Latitude		Longitude	
Location: Area 1 (KP252 – KP225)	496787	6480725	58°	28.030 N	003°	03.305 W
	499317	6480268	58°	27.785 N	003°	00.702 W

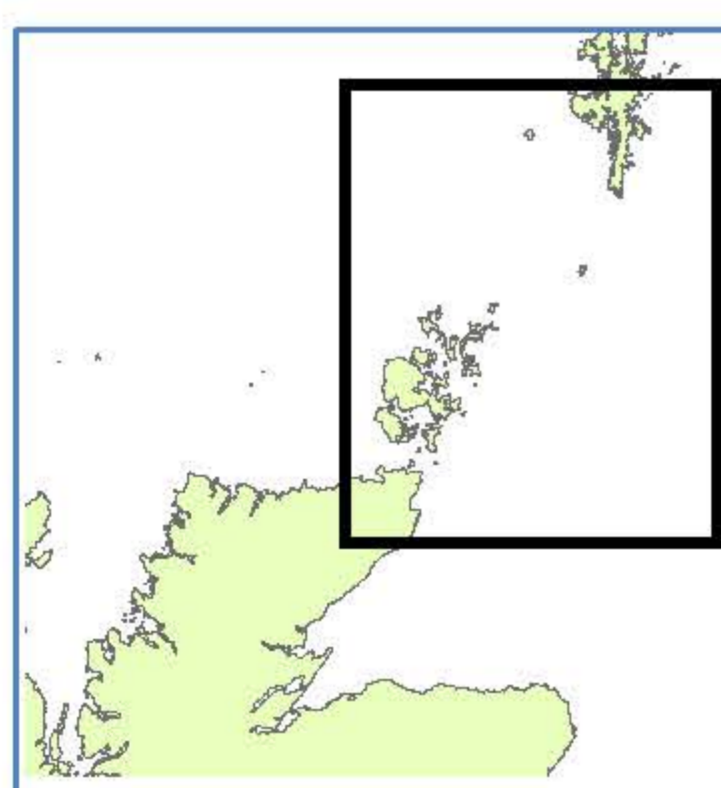
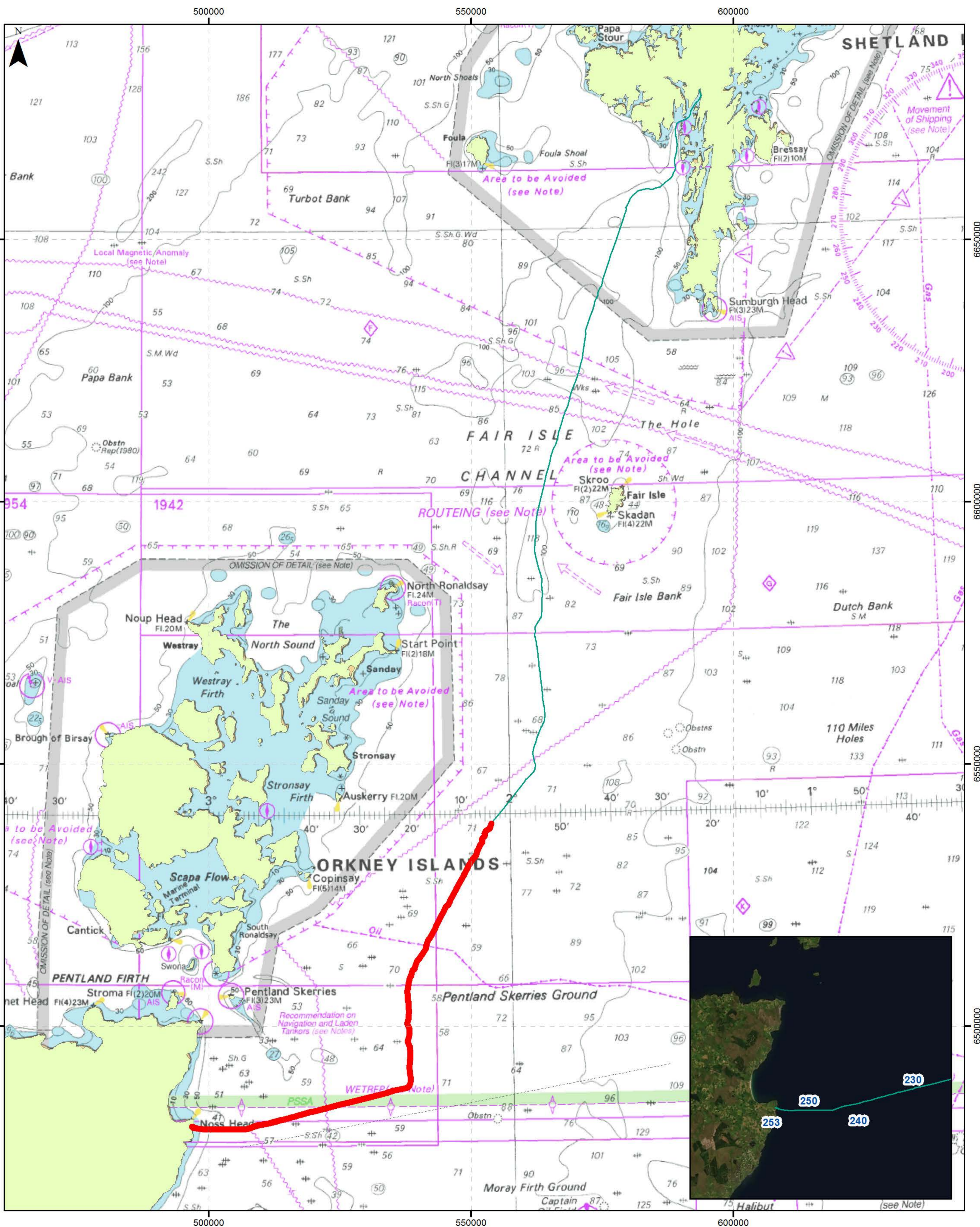
Area	WGS84 UTM Zone 30N		Degrees Decimal Minutes			
	Easting	Northing	Latitude		Longitude	
	500125	6480262	58°	27.781 N	002°	59.870 W
	507352	6480336	58°	27.818 N	002°	52.439 W
	509129	6480996	58°	28.171 N	002°	50.610 W
	518825	6483415	58°	29.456 N	002°	40.625 W
	523657	6484659	58°	30.113 N	002°	35.645 W
Location: Area 2 (KP225 – KP200)	523657	6484659	58°	30.113 N	002°	35.645 W
	528516	6485870	58°	30.748 N	002°	30.633 W
	538119	6488497	58°	32.119 N	002°	20.718 W
	538216	6498250	58°	37.374 N	002°	20.520 W
	538217	6498245	58°	37.371 N	002°	20.519 W
Location: Area 3 (KP200 – KP155)	538217	6498245	58°	37.371 N	002°	20.519 W
	538089	6508056	58°	42.658 N	002°	20.552 W
	542208	6516964	58°	47.435 N	002°	16.185 W
	546968	6525708	58°	52.117 N	002°	11.135 W
	551683	6534457	58°	56.798 N	002°	06.107 W
	552875	6537274	58°	58.307 N	002°	04.824 W
	553870	6538603	58°	59.015 N	002°	03.765 W

Scottish Hydro Electric Transmission Legal Notice

Please be advised that this Notice to Mariners should be treated as official notice of the nature, duration and location of the works which are scheduled to take place. During the period of notice, failure to remove equipment or entry into the identified location may have serious consequences and may be considered a breach of the Convention on International Regulations for Preventing Collisions at Sea 1972 and/or the Merchant Shipping Act 1995 (a breach of which can carry criminal sanctions). Additionally, Scottish Hydro Electric Transmission may consider taking legal action to remove any obstruction and/or seek damages for any delay, in addition to any legal costs in doing so.

Scottish Hydro Electric Transmission will commence works on the **23rd June 2022**. Please be advised that any equipment remaining within the notified location, after the **19th of June 2022**, will be regarded as having the potential to obstruct or delay the works and **will be removed without further notice to you and may be discarded**. In these circumstances, no compensation will be payable to you for any losses (including loss of equipment and/or loss of profit).

For the avoidance of any doubt, no compensation will be paid in relation to any new equipment placed within the identified location following the issuance of this Notice to Mariners.



Legend

- Cable Installation Activities
- Shetland HVDC Link

Projection:
WGS 1984 UTM Zone 30N

Scale:
0 10 20 km

Date:
April 2022

Issue:
v0.1

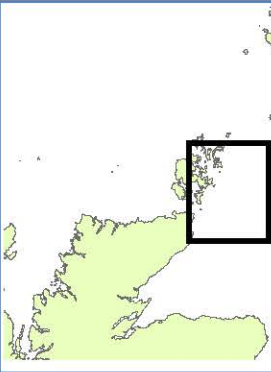
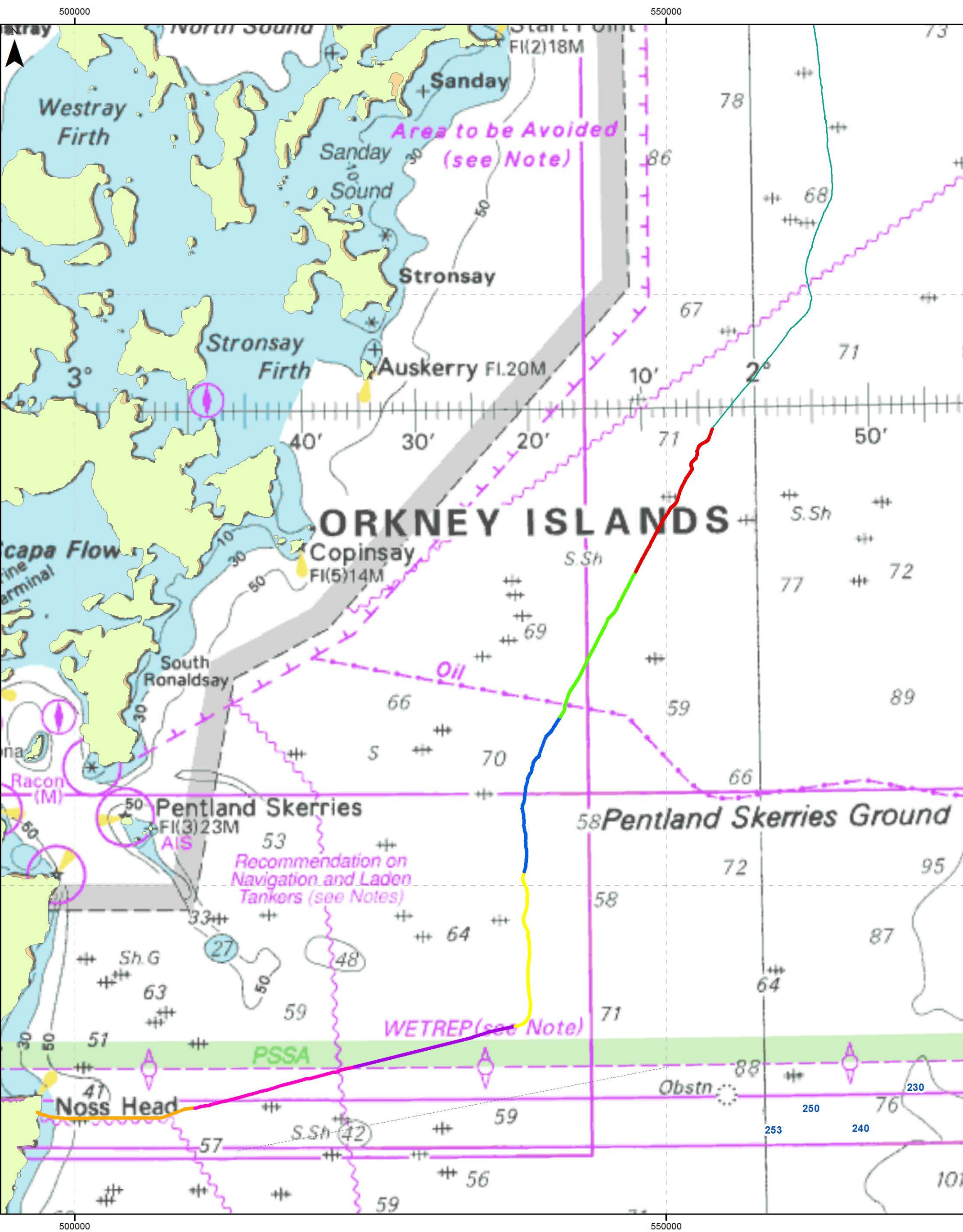
Drawn by:
NB

Title:
Cable Installation Activities
(KP235 - KP155)

Client:

NKT

MarineSpace
Making Sense of the Marine Environment™



Legend

- Guard vessel 1
- Guard vessel 2
- Guard vessel 3
- Guard vessel 4
- Guard vessel 5
- Guard vessel 6
- Guard vessel 7
- Shetland HVDC Link

Projection:
WGS 1984 UTM Zone 30N

Scale:
0 5 10 km

Date:
May 2022

Issue:
v0.1

Drawn by:
NB

Title:
Guard Vessel Locations during
Cable Installation Activities

Client:



MarineSpace
Making Sense of the Marine Environment™