

# NOTICE TO MARINERS

West of Orkney Windfarm

Nearshore Geophysical and Benthic Survey 2022

Rev 02 – Issued: 06/09/2022

This Notice to Mariners shall be updated as the survey progresses.

## Summary

- This survey shall take place from 17/08/2022 to 14/10/2022
  - Spectrum Nyquist to start on 17<sup>th</sup> of August
  - Spectrum 1 to start on the 9<sup>th</sup> of September
- Contact details
  - Onshore FLO: phone: +44 (0) 7926418820, email: [OWPLFisheries@xodusgroup.com](mailto:OWPLFisheries@xodusgroup.com);
  - Offshore
    - Spectrum Nyquist: +44 (0) 7803031728 or +44 (0) 7367033380
    - Spectrum 1: +44 (0) 7538 565561
- Name of vessel carrying out the work and towed equipment used: **MV Spectrum1 (Geophysical and benthic and Spectrum NyQuist (geophysical))**
  - High Frequency Sub-Bottom Profiler (SBP);
  - Multi-Beam Echosounder (MBES);
  - Side Scan Sonar (SSS);
  - Sound Velocity Profiler (SVP);
  - Ultra Short Baseline (USBL); and
  - Magnetometer
  - 0.1 m<sup>2</sup> mini Hamon-Grab (or similar) for infauna, Particle Size Analysis (PSA) and Total Organic Carbon (TOC);
  - Drop down high definition camera and video with seabed frame;
  - Niskin water sampling; and
  - Shipek grab (or similar) for contaminants.
  
- Port of operation: **Scrabster**.

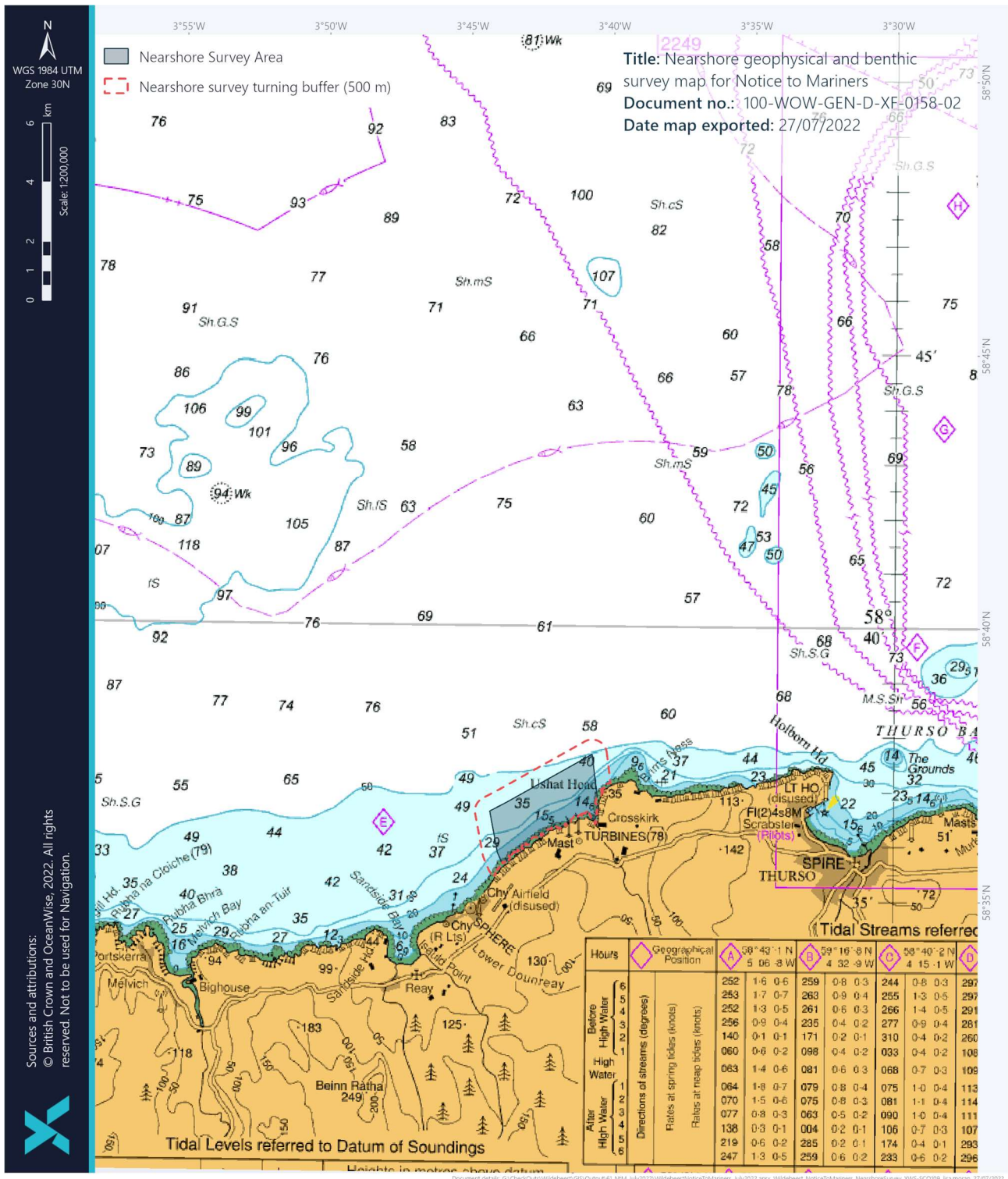


Figure 1. Area to be surveyed within this survey.

## Full information

Mariners are advised that a survey vessel and equipment will be used at the export cable route landfall options located along the North Caithness coast. Vessel turning areas will extend up to 500m beyond the survey lines.

Nearshore geophysical and benthic survey work will be carried out by Spectrum Geosurvey Limited using survey vessel MV Spectrum1 (geophysical and benthic) and Spectrum NyQuist (geophysical) from Scrabster.

## Vessel information



---

Vessel	MV Spectrum1
MMSI	235075021
Owner	Spectrum Geosurvey Limited
Phone	+44 (0) 7538 565561
Email	<a href="mailto:spectrum1@spectrum-ofshore.com">spectrum1@spectrum-ofshore.com</a>

---

## OWPL Nearshore Geophysical and Benthic Survey 2022

Notice to Mariners

[www.westoforkney.com](http://www.westoforkney.com)



---

Vessel	Spectrum NyQuist
MMSI	232031312
Owner	Spectrum Geosurvey Limited
Phone	+44 (0) 7803031728 or +44 (0) 7367033380
Email	<a href="mailto:nelson@spectrum-offshore.com">nelson@spectrum-offshore.com</a>

---

During surveying activities within the survey areas, the vessel will have restricted ability to manoeuvre and approaching vessels are requested to pass at a safe speed and distance. The proposed survey is a Nearshore Geophysical and Benthic Survey, which is essential to development of export cable landfall and to identify requirements for further surveys.

### Project Description

The West of Orkney Windfarm survey will be conducted by Spectrum Geosurvey Limited on behalf of Offshore Wind Power Limited (OWPL).

## Nearshore Geophysical and Benthic Survey Task

A Nearshore Geophysical and Benthic Survey will be carried out at the export cable route landfall options located along the North Caithness coast (see Figure 1) and coordinates are provided in Appendix A1.

The Nearshore Geophysical and Benthic Survey will include use of the following survey equipment at each of the surveyed areas:

- High Frequency Sub-Bottom Profiler (SBP);
- Multi-Beam Echosounder (MBES);
- Side Scan Sonar (SSS);
- Sound Velocity Profiler (SVP);
- Ultra-Short Baseline (USBL); and
- Magnetometer
- 0.1 m<sup>2</sup> mini Hamon-Grab (or similar) for infauna, Particle Size Analysis (PSA) and Total Organic Carbon (TOC);
- Drop down high-definition camera and video with seabed frame;
- Niskin water sampling; and
- Shipek grab (or similar) for contaminants.

Mariners are advised to keep a safety clearance of the vessel of no less than 500m.

## Port of Operation

Spectrum will mobilise / operate out of the port of **Scrabster**.

## Survey duration

The survey will commence on the 17<sup>th</sup> of August and run through to the 14<sup>th</sup> of October. The total duration for survey activity is expected to take 28 days, and additional days have been included in the duration to account for unforeseen operational and/or weather delays.

## Contact Details for Fisheries Liaison

Fisheries Liaison is being carried out by Xodus Group, for all fisheries enquires please contact Xodus Group Fisheries Liaison Officer (FLO).

---

Telephone number                    +44 (0) 7 926 418820

Email                                    OWPLFisheries@xodusgroup.com

---

## A.1 Coordinates of the nearshore area

Point ID	Latitude	Longitude
1	58° 37.133' N	003° 39.894' W
2	58° 37.032' N	003° 40.213' W
3	58° 36.846' N	003° 40.383' W
4	58° 36.395' N	003° 40.406' W
5	58° 36.607' N	003° 40.701' W
6	58° 36.367' N	003° 41.833' W
7	58° 35.691' N	003° 43.494' W
8	58° 35.410' N	003° 43.920' W
9	58° 35.541' N	003° 44.131' W
10	58° 35.741' N	003° 44.299' W
11	58° 35.798' N	003° 44.333' W
12	58° 36.549' N	003° 44.615' W
13	58° 36.717' N	003° 44.574' W
14	58° 36.838' N	003° 44.353' W
15	58° 37.008' N	003° 43.748' W
16	58° 37.891' N	003° 40.803' W
17	58° 37.900' N	003° 40.322' W
18	58° 37.692' N	003° 40.033' W
19	58° 37.133' N	003° 39.894' W

