

Notice to Mariners

Scottish Hydro Electric Power Distribution (SHEPD) Pentland Firth East (1) Submarine Cable

Date of Issue: 3rd July 2020

Overview

Please be advised that Global Offshore and their subcontractors (on behalf of SHEPD) will be undertaking marine construction activities across the Pentland Firth for a new submarine electricity cable. An overview of the cable route is shown below in Figure 1

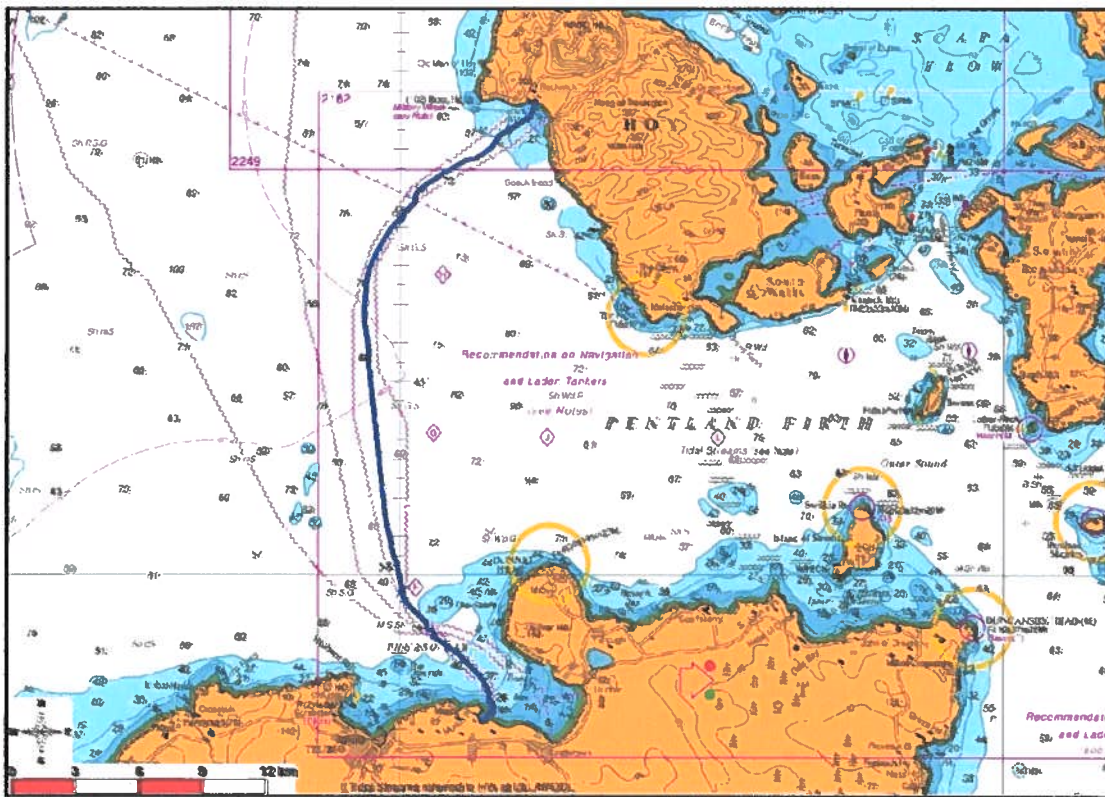


Figure 1: Route Overview

Removal of fishing gear +/- 250 m from the provided Route Co-Ordinates (Figure 2) is requested during the Marine Construction works in order to prevent damage to any fishing gear and to the construction equipment being used.

ID (Position Name / Event)	WGB84		WGB84 - UTM	
	Latitude DDMM.MMMM N	Longitude DDMM.MMM W	Easting XXXXXX	Northing XXXXXXX
TJP	59°52.2500'N	03°23.3120'W	477594	6525746
LP	59°52.1750'N	03°23.3830'W	477544	6525697
AC	59°51.8067'N	03°23.5446'W	477387	6525500
AC	59°51.7896'N	03°23.7274'W	477150	6524901
AC	59°51.3930'N	03°24.0528'W	475979	6524156
AC	59°51.2883'N	03°25.2166'W	475750	6523961
AC	59°51.1800'N	03°25.3602'W	475623	6523758
AC	59°51.0658'N	03°25.5122'W	475488	6523531
AC	59°50.8011'N	03°25.6042'W	475307	6523228
AC	59°50.7703'N	03°26.3262'W	474877	6523108
AC	59°50.7576'N	03°26.7386'W	474283	6522948
AC	59°50.2824'N	03°26.2123'W	472860	6522113
AC	59°50.0197'N	03°26.6131'W	472278	6521741
AC	59°49.8231'N	03°26.1318'W	471970	6521453
AC	59°49.8113'N	03°26.2814'W	471824	6521248
AC	59°49.6168'N	03°26.3621'W	471754	6520891
AC	59°49.5326'N	03°26.4801'W	471840	6520744
AC	59°49.4270'N	03°26.7286'W	471368	6520538
AC	59°49.1725'N	03°26.1082'W	471020	6520087
AC	59°49.0231'N	03°26.4080'W	470750	6519782
AC	59°48.8938'N	03°26.8330'W	470315	6519183
AC	59°48.3322'N	03°31.2153'W	469842	6518515
AC	59°47.9830'N	03°31.5082'W	469585	6517851
AC	59°47.8330'N	03°31.7252'W	469441	6517231
AC	59°48.6755'N	03°31.6608'W	469356	6515466
AC	59°45.7280'N	03°31.5852'W	469548	6513880
AC	59°45.4387'N	03°31.5870'W	469541	6513140
AC	59°42.0346'N	03°30.6678'W	470197	6508828
AC	59°41.9775'N	03°30.6618'W	470202	6508720
AC	59°41.7211'N	03°30.7983'W	470250	6508244
AC	59°41.6611'N	03°30.7584'W	470288	6508047
AC	59°41.2703'N	03°30.6710'W	470385	6506487
AC	59°40.8756'N	03°30.4756'W	470550	6504873
AC	59°40.8638'N	03°30.4754'W	470585	6504327
AC	59°40.5785'N	03°30.3820'W	470655	6504120
AC	59°40.4088'N	03°30.2201'W	470781	6503801
AC	59°40.3386'N	03°30.1874'W	470840	6503870
AC	59°40.2013'N	03°30.1457'W	470850	6503419
AC	59°40.0080'N	03°30.0480'W	470853	6503050
AC	59°39.7584'N	03°29.9841'W	471028	6502592
AC	59°39.5840'N	03°29.9175'W	471071	6502273
AC	59°39.4533'N	03°29.8484'W	471135	6502020
AC	59°39.1788'N	03°29.5512'W	471420	6501513
AC	59°38.3808'N	03°29.1858'W	472749	6499080
AC	59°38.3100'N	03°29.0883'W	472843	6498868
AC	59°38.2120'N	03°27.7743'W	473128	6497111
AC	59°38.1278'N	03°27.5372'W	473354	6496553
AC	59°37.9820'N	03°27.0021'W	473783	6496281
AC	59°37.7865'N	03°26.8088'W	474028	6496034
AC	59°37.5884'N	03°26.3694'W	474478	6495644
AC	59°37.3755'N	03°26.0388'W	474704	6495147
AC	59°37.2500'N	03°25.6302'W	474898	6494930
AC	59°37.1525'N	03°25.6800'W	475130	6494804
AC	59°36.8544'N	03°25.5833'W	475231	6494383
AC	59°36.8045'N	03°25.5884'W	475247	6494252
AC	59°36.8825'N	03°25.5433'W	475288	6494132
AC	59°36.7951'N	03°25.5250'W	475285	6494087
AC	59°36.7830'N	03°25.5090'W	475350	6494017
AC	59°36.7385'N	03°25.4881'W	475311	6493882
AC	59°36.6802'N	03°25.4850'W	475341	6493872
AC	59°36.6538'N	03°25.4331'W	475373	6493804
AC	59°36.5780'N	03°25.3774'W	475428	6493663
AC	59°36.6467'N	03°25.3473'W	475455	6493625
AC	59°36.6245'N	03°25.3450'W	475458	6493584
AC	59°36.6020'N	03°25.3836'W	475438	6493524
LP	59°36.2482'N	03°28.6201'W	474028	6493051
TJP	59°36.1780'N	03°28.0280'W	474787	6492827

Figure 2: Route Co-Ordinates

Schedule of Operations

The Marine Construction activities are due to commence on the 13th of July and complete on the 1st of September. A breakdown of the operations is shown below in Table 1.

Table 1: Schedule of Operations

Dates	Operation	Vessel(s)
13 Jul – 15 Jul	Pre Lay Survey	Normand Clipper
15 Jul – 17 Jul	Cable Crossing Construction	Normand Clipper
17 Jul – 15 Aug	Cable Installation Operations	Normand Clipper MV Challenge Delta 9151 MV Explorer





		Fusion 490
21 Jul – 01 Sept	Rock Bag Installation	Skandi Carla (TBC)
21 Jul – 01 Sept	Cable Burial Operations	Global Symphony
21 Jul – 01 Sept	Split Pipe Installation	MV Challenge

Vessel and Equipment Details

The vessels that will carry out the marine construction activities are listed in Table 2 below.

Table 2: Vessel Details

Vessel Photo	Vessel Description
	<p>Normand Clipper Length: 126 m, Width: 26 m, Max Draft: 8 m Call Sign: LAXJ7 MMSI No.: 257820000</p> <p>Mobilised with 2 x FCV 600, see Table 3 below.</p>
	<p>Global Symphony LOA: 130.2 m, Breadth: 24 m, Max Draft: 7.5 m Call Sign: C6YY3 MMSI No: 311049100</p> <p>Mobilised with 1 x Q1400 Burial Tool and 2 x FCV 3000, see Table 3 below.</p>
	<p>Skandi Carla (TBC) LOA: 83.85 m; Width: 19.7 m; Draft: 6.2 m Call Sign: C6RX4 MMSI No.: 311222000</p> <p>Mobilised with 2 x FCV 3000, see Table 3 below.</p>

Vessel Photo	Vessel Description
	<p>MV Challenge Length: 14.4 m, Beam: 4.28 m, Draft: 1.44 m Call Sign: MXBV6 MMSI: 235083546</p>
	<p>Delta 9151 Length: 10 m, Beam: 2.75 m, Draft: 0.5 m Call Sign: MCVE3 MMSI: 232014627</p>
	<p>MV Explorer Length: 7.4 m, Beam: 2.75 m Fixed VHF MCA Cat 3</p>
	<p>Fusion 490 Length: 4.92 m, Beam: 2.08 m, Height: 1.1 m Leask Marine</p>

Construction Works Description

The construction activities will result in a new submarine cable linking the Scottish mainland to the island of Hoy. The stages of the construction are listed below:

- Pre-Lay Survey Works
- Crossing Construction
- Cable Installation
- Rock Bag Installation for Stabilisation
- Cable Burial for Protection and Stabilisation
- Split Pipe Installation for Protection and Stabilisation

Construction Vessel lights and shapes will be displayed at all times. Other vessels should maintain an appropriate and safe distance of 500 m when passing the construction vessels whilst undertaking operations and should pass at the lowest possible speed to avoid vessel wash effects. The vessel will be working 24-hour operations. The vessel(s) will also monitor VHF Channels 16 and 12.

Equipment calibration operations may take place out with the defined corridor and these areas will be chosen so as not to interfere with fishing/shipping activity.

Contact Details

The vessel operator contact details are given below:

- Offshore Manager Normand Clipper - oim.clipper@globalmarine.group
- Offshore Manager Global Symphony - oim@symphony.globaloffshore.co.uk
- MV Challenge Contact - grahame@23degreesrenewables.co.uk
- MV Explorer Contact - grahame@23degreesrenewables.co.uk
- Delta 9151 Contact - grahame@23degreesrenewables.co.uk
- Fusion 490 Contact - grahame@23degreesrenewables.co.uk

Fishing Liaison Officers

Fishing liaison for the construction works will be co-ordinated by Brown and May Marine (BMM). For any commercial fishery queries please contact the Company Fishing Liaison Officers (CFLOs) Alex Winrow-Giffin on 07760 160039 / 01379 872144, alex@brownmay.com or Meg Kalafat on 07702 710176 / 01379 872146, meg.kalafat@brownmay.com. The local Fishing Industries Representatives (FIRs) Chris Davidson (07810 305100), cad17@hotmail.co.uk and James Bremner (07889 760299), bremnj@aol.com will also be in place to liaise with the vessel and fishing operations in the area. The vessel master will issue regular broadcasts whilst construction and survey works are ongoing to ensure minimal disruption and that vessels maintain an appropriate and safe distance.

Distribution List

The Distribution List of the Notice to Mariners should be as per the stakeholder list in the Fisheries Liaison and Management Action Plan (FLMAP).